



Discover Swan Lake Resort 2024

Welcome to membership at Swan Lake Resort. We are so grateful to have you with us. Successful clubs are those built around the foundation of enduring relationships and social camaraderie between friends and associates. We can't wait for you to become a part of our foundation and add to our culture of lasting relationships.

I have created this document to help you Discover Swan Lake Resort. Should you have any questions, please never hesitate to reach out to me personally or any member of our Golf Professional Staff.

Warm Regards,

Chad Hutsell

Director of Golf, Swan Lake Resort

New Member Orientation

Phone Numbers and Introduction of Staff

| | | | |
|---|---|--|--------------------------|
| Golf Shop Direct | 574-936-9798 | | |
| Swan Lake Resort | 574-935-5680 or 800-935-5616 both may be used with Staff Extensions | | |
| Director of Golf | Chad Hutsell | chutsell@swanlakeresort.com | x751 Mobile 574-780-2693 |
| Head Golf Professional | Ryan Steele | rsteele@swanlakeresort.com | x752 |
| Assistant Golf Professional | TBD | TDB | x757 |
| Golf Interns | TBD | TBD | x757 |
| Director of Instruction | John Ericsson | jericsson@swanlakeresort.com | x722 Mobile 574-229-1061 |
| General Manager/Managing Member | Matt Hovermale | mhovermale@swanlakeresort.com | x716 |
| Director of Hotel Operations/ Managing Member | Kristen Hovermale | khovermale@swanlakeresort.com | x766 |
| Golf Course Superintendent | Mike Gann | mgann@swanlakeresort.com | x731 |
| Wedding Sales Coordinator & Corporate Sales Agent | John Bryan | jbryan@swanlakeresort.com | x781 |
| Banquet & Events Manager | Chae Scarborough | eventssales@swanlakeresort.com | x787 |
| Stay and Play Sales Agent | Kerri Frascchetti | kfrascchetti@swanlakeresort.com | x767 |
| Stay and Play Sales Agent | Monica Monk | mmonk@swanlakeresort.com | x768 |
| Executive Chef | | | |
| Food & Beverage Manager | | | x741 |
| Property Maintenance Mgr | Abree Gonc | agonce@swanlakeresort.com | x791 |

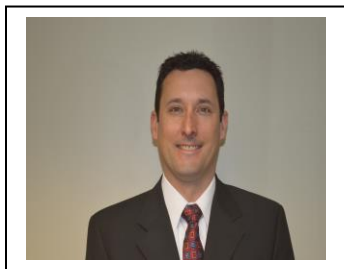
Membership Privileges

- Unlimited Green Fees/rounds of golf (cart fees extra and tee times required)
- Unlimited Seasonal outdoor and winter indoor practice facility use, tokens available from the Golf Shop
- IGA-PGA Blue Golf Handicap for each member
- **28 Day Advance Tee Times**
- Access to Fitness Center, indoor/outdoor pools and whirlpools- check in a Hotel Front Desk required, Access to these amenities is for the member only
- 20% off non-sale clothing and gloves
- 10% off all other non-sale golf shop merchandise
- 30% off rack rates on lodging (at time of booking, for member only). No discounts on special rates
- 10% off Clinic, Group and Individual golf instruction
- Aggressive pricing on club fitting and private instruction
- 10% off Resort dining at ChopHouse Restaurant or Putters Bar & Grille (alcohol excluded)
- Access to golf special events such as Men's Club, Member Tournaments and League opportunities
- Guests receive a 10% discount on green fees when accompanied by you

PGA Professional Staff Biographies

Chad A. Hutsell, PGA Director of Golf

2014 and 2018 Indiana PGA Merchandiser of the Year- Resort Category



Born and raised in Indiana, I graduated from Brownsburg High School and then attended Butler University where I earned a Bachelor of Science degree in Marketing while playing NCAA Division I Golf for 4 years. After college, I began my career in the golf business at Highland Golf & Country Club in Indianapolis working for Indiana Golf Hall of Fame Professional, John Dunham. In the 6 seasons working for John, he instilled in me the passion for the business I have today. I learned every facet of the business including merchandising, member service, teaching and tournament operations. From 1999 through 2010 I was the

Head Golf Professional at Plymouth Country Club. My time at PCC allowed me to cement what I wanted to do in the golf industry, which is to take care of a Membership through Member Events, Merchandising and building Relationships. Coming to Swan Lake Resort in 2012 was a new adventure for me. Learning the nuances of a larger Resort Operation has been a joy for me. I take tremendous pride in our ability to balance the needs of all the guests we serve. Member Relations and Member Programming continue to be of the utmost importance to me. I love working for our Membership. Please don't hesitate to see me for anything I can do to improve your experience.

Ryan B. Steele, PGA Certified Professional, Head Golf Professional

2019, 2020 and 2022 Indiana PGA Merchandiser of the Year- Resort Category



Born and raised in Crawfordsville, Indiana, I graduated from Rochester High School and then attended Methodist College where I earned a Bachelor of Science degree in Business Administration and Marketing with a Concentration in Professional Golf Management. I graduated Summa Cum Laude in 2004. After college, I began my career as the First Assistant Professional at Harrison Lake Country Club in Columbus, Indiana from 2004 through 2008. In 2009 I switched gears and went to work for the Professional Golfers Association of America to become their PGA Golf Management University Coordinator. In 2016 I returned to the "green grass" golf business and Indiana to be the First Assistant Golf

Professional at Hillcrest Golf and Country Club in Batesville, IN. In early 2017 began my tenure with Swan Lake Resort as the Head Golf Professional. I enjoy bringing my diverse skill set and unique experience to the job of serving all of our guests at Swan Lake Resort.

John K. Ericsson, PGA, Director of Instruction



Born and raised in Erie, PA I graduated from Cathedral Prep High School and then attended Gannon University, also in Erie, where I earned a Bachelor of Science degree in Business Administration. After college, I traveled south to Texas and began my career at the Four Seasons Resort Dallas, home of the Byron Nelson Golf Classic. After 3 seasons as the Assistant Professional, I was promoted to Head Golf Professional. For the next 20 years I held the positions of Head Professional or General Manager at several of the finest clubs in the Dallas/Ft. Worth area before moving to Indiana. I have been fortunate to host or assist clinic with some notable teachers including Dr. Gary Wiren, Mike Adams, Ken Venturi, Byron Nelson, Jerry Pate, Miller Barber, Don January, Art Sellinger and Mike Dunaway. All quality instructors want to prepare their students for the challenges that they will face on the golf course and Swan Lake Resort has some of the finest facilities that I have seen.

Our short game area allows the student to replicate nearly any shot they will face. My approach to teaching is student centric, favoring a flexible method that helps them become aware of their strengths and utilize them to their advantage. I believe that everyone is good at learning. Learning golf is a process that is built on what the individual already knows. With that as a reference, learning becomes natural again. Please don't hesitate to see me if you are struggling with any aspect of your game. I am positive we can help and get you on the right path.

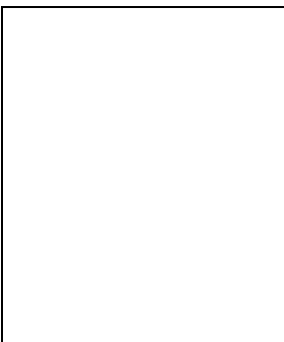
Matt Hovermale, PGA, General Manager



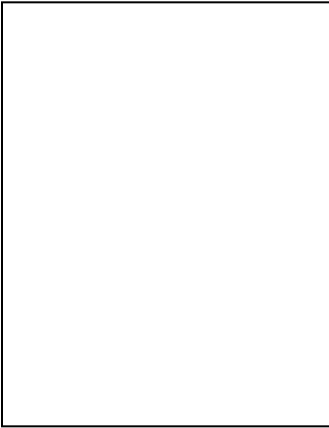
Born in Anderson, IN and raised there along with Nebraska and Valparaiso, IN, I graduated from Valparaiso High School and then attended Trine University in Angola, IN. I earned a Bachelor of Science degree in Business Administration and Management with an emphasis in Golf Management in 2001. After college, I became the Assistant Professional at Zollner Golf Course through August 2005. I became the Head Professional at Lake James Golf Club through December 2007 and then at The Course at Aberdeen in Valparaiso, IN through 2011. Since 2011, I have had the pleasure of working for you at Swan Lake Resort. In my tenure here, I have held many positions beginning as the PGA Merchandise Manager and Assistant GM

from 2013 to 2020. I am thrilled to now be your General Manager and part of your new Ownership Team along with my wife Kristen Hovermale who is the Director of Hotel Operations. Kristen and I have two wonderful dogs named Ferris and Bueller! While my position doesn't always bring me in direct contact with our Membership (my office is located at the Resort), I work closely with our Golf Professional Staff to understand your needs and assist in creating programming that exceeds your expectations. Lines of communication and my door are always open if there is anything I may assist you with.

TDB, Assistant Golf Professional



Golf Intern: TBD



Practice Facility Features and Procedures

Location and Features The practice facility and Golf Academy are located across the street from the Golf Shop. In most cases, members are permitted the use of golf carts to drive to the practice area or alternatively you may park your car there as well. Our Practice Facility is the most complete in Northern Indiana featuring 3 acres of tee surface and an outstanding Short Game Area consisting of 3 practice bunkers and 5 greens for imagination and improvement. While you can use the Short Game Area in any way that suits your game, we kindly request you refrain from hitting of any full shot/taking of large divots on the fringe/collar of the largest practice green that sits nearest the Academy Building. This green and fringe area is used primarily for short chips and pitches for all guests. Feel free to swing fully in any of the other fairway areas or tee areas around the Short Game area. There is also one Practice Hole on the golf course side of the street. It is located to the south of the Clubhouse parking lot and sits alongside the fence row next to Plymouth Laporte Trail. The hole is 240 yards with a large fairway and green for iron and short game shots.

Tokens and Ball Dispensing Machine Tokens are available free to members from the Golf Shop. Each token is 60 balls. Members are permitted tokens for themselves and their guests. The Ball Dispensing Machine is located across the street on the back, left side of the Academy Building. Simply place a basket underneath and place your token in the machine.

Hitting Area We place a designated area for full swings on one of the practice tees. You will find the area designated with 2 long ropes for you to hit between and towards the target area. There are bag stands, yardages posted and club washers for your convenience

Hours of Operation Generally the Practice Areas open for the season shortly after the golf courses open and close shortly before they close for the season. The Director of Golf will notify you via email of seasonal opening and closing. Daily, the practice areas are open during normal Golf Shop Hours which are listed below. **The only alteration to that schedule is on Sunday evenings. The Practice Areas close on Sunday evenings approx. 4pm sometimes earlier so that we may pick the areas completely of practice balls in preparation for mowing on Monday mornings.** These days and timing are usually very dependable, but are sometimes altered due to our golf course schedule or weather. We will do our best to notify you in advance of any change but we apologize in advance if a schedule change catches you off guard. On Memorial and Labor Day Weekends will most likely close the range on Monday evening for Tuesday morning mowing.

Tee Time Procedures and Check In

One of the great features of having 36 holes is there is a lot of golf available, although all players including members at Swan Lake Resort are still required to secure a tee time for play on the courses.

Swan Lake is committed to a wonderful member experience and a tee time is an essential part of that. We serve nearly every category of player from Stay and Play, League, Public and Golf Outing guests all at varying times. Securing a tee time allows us to properly prepare for and manage daily play and

schedule necessary staff. Knowing your intentions is the only way we can ensure your enjoyment of our facility. The last thing we would ever want is for you to be disappointed or upset that we couldn't accommodate you. Also in certain cases, we may be able to steer you to a time that will be more enjoyable to you. We sincerely appreciate your help in this process.



We offer Cart Pass options to compliment your membership dues. Even if you have a cart pass, we still require a tee time and check in.

Checking In with the Golf Shop is also another way for us to improve your experience. All players including members are required at all times to check in at the Golf Shop. Certainly, those who don't have a cart pass option will need to check in the Golf Shop to secure payment for golf cart rental, but so must those with Cart Passes. Checking In affords us two things. First, it allows us to briefly say hello to you and know you are here. While we want the process to be efficient and it will be, we also value building a relationship with you. Checking In allows us to relay any important messages about the golf course conditions and possible alterations to your starting procedures. And lastly it allows us to take care of our normal business/accounting features of securing cart rental payment and rounds of golf tracking. If you are a Cart Pass Holder, a simple quick hello and check in at the counter to any Inside Golf Shop Staff and you are on your way to the tee. Again, we greatly appreciate your help.

Golf Shop Hours of Operation

From Season Course Closing (through Winter) to next Season Course Opening

We will have special hours that we will notify you of, but they are typically:

- Tuesday through Friday 9am to 5pm
- Saturday 9am to 1pm
- Closed Saturday afternoon, Sunday and Monday

During the Golf Season we are open 7 days a week (unless otherwise notified)

Course Hours for tee times

March 9am to Close (if the courses are open)
April 8am to Close
May through August 7:30am to Close
September 8am to Close
October 9am to Close
November 9am to Close (if the courses are open)
Off Season Hours- course is closed

Golf Shop Hours

8:30am to Close when open
7:00am to Close
6:30am to Close
7:00am to Close
8:00am to Close
8:30 am to Close when open
9am to 5pm Tues-Frid
9am to 1pm Sat
Closed Sun and Mon

Close is dusk and all carts are required to be in before dark

Putters Grille at the Clubhouse- Hours of Operation: Mid April to Mid October



In Season Hours

Breakfast: Every Day Open - 10am, opening times are approx.. ½ hour before the first time of the day

Lunch and Dinner: Sun – Sat 10am to 9pm

Off Season Hours- April, October- times subject to availability and weather

Breakfast: TDB, opening times are approx. ½ hour before the first tee time of the day

Lunch and Dinner: Sun – Thur 10am to close, closing time varies depending on weather, please check with the Golf Shop or in the Grill for these hours

Please note that in the opening of the season the Grill opens and expands hours very gradually hitting full stride around May 1st

ChopHouse Restaurant at the Resort- Hours of Operation- reservations always requested



In Season Hours- times are approximate and subject to change, please call ahead

Lunch: TBD

Dinner: Sun –Thur 5 to 10pm Fri and Sat 5 to 11pm

Off Season Hours- times are approximate and subject to change, please call ahead

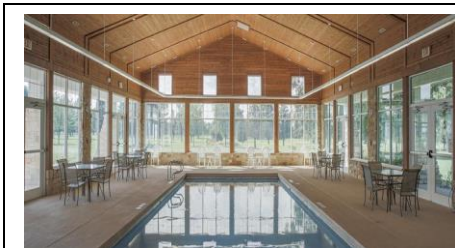
Closed Sunday and Monday

Dinner: Sun – Thur 5 to 9pm Fri and Sat 5 to 10pm

Fitness Center/Indoor Pool/Whirlpool- Hours of Operation: 7am to 11pm

Members must check in at the Hotel front desk and walk down to the pools and fitness areas. Please bring your own towel. Swan Lake does not provide them. The access to these amenities extends only to the member and spouse and children if they are members. Any others must pay a guest fee.

Outdoor Pool Hours of Operation: 7am to 11pm, approx. Memorial Day to Labor Day



The Golf Academy at Swan Lake Resort

Hours of Operation

The Golf Academy will have posted hours all year long that we will notify you of via email and that will be posted at the Academy Building. During those hours the Academy building may or may not be open. Instruction and Academy Services are by a scheduled appointment. If our Instructors are busy with a student, the building will be locked. Our Director of Instruction does not have full time support staff working with him in the building and that is why it will be unavailable if he is instructing. This is to secure the building and also provide an uninterrupted experience for the Instructor and Student.

Golf Academy Services

Golf instruction should be a sociable, enjoyable activity. Our PGA Professionals are so invested in their approach to teaching the game that they have worked together to develop a revolutionary array of instructional opportunities. In addition to our traditional Stay and Play Academy Packages, we offer private instruction, value-priced introductory clinics, and select complimentary clinics for adults, couples, ladies, juniors, members and guests.

The Golf Academy at Swan Lake Resort has helped thousands of golfers. We use state-of-the-art diagnostic technology to enhance your learning experience and provide precise club fitting. This technology aids our experts in eliminating guesswork and increases learning efficiency. The feedback also shortens the time required to develop the student's personal technique. The Golf Academy staff is here to help YOUR individual game, rather than teach a system. Your experience will be finely tailored, utilizing your desire to enjoy the great game of golf. **And we teach year round!**

Contact one of our golf professionals and get started today!

Our Academy, Facility and Golf Professional Awards

- Americas Best 100 Club Fitters – Golf Digest – 2010 and 2011
- SMT Certified 5 Star Club Fitter – One of 5 Awards Worldwide – 2008
- Mizuno Top 100 Club Fitters – 2007 and 2008
- PGA Teacher of the Year 2016
- PGA Merchandiser of the Year Resort Category 2014, 2018, 2019, 2020, 2022
- 2018 Golf Course of the Year Indiana Golf Course Owners Association
- 2018 Midwest Region Course of the Year National Golf Course Owner's Association
- Pilot News Reader's Choice 1st Place Favorite Pro Shop
- Pilot News Reader's Choice 1st Place Favorite Golf Course
- Pilot News Reader's Choice 1st Place Favorite Practice Facility

Adult Instructional Programs **TBD- here is an example of past offerings:** details will be emailed

Putting School “Putt for Dough” improve your putting skills: 1) Distance 2) Line 3) Green reading. Available for individual or group (2-4) lessons.

Short Game Academy “Get up ‘n down from anywhere” Master your game from 50 yards and in. Chipping, pitching and sand shots. Available for individual or group (2-4) lessons.

Driver's ED “Drive for show” Optimize your distance and accuracy for your swing speed. Driver only specific training, contact, launch and swing plane training. Available for individual and group series (2-4) lessons.

Golf Lessons for Beginners “Get Golf Ready” Get fully oriented to your new game! 1 lesson per week for 5 weeks will get you ready for the course! Individual and group series (2-4) available.

Junior Golf Instructional Opportunities **TBD- here is an example of past offerings**

Intro to Golf Summer Junior Clinics

A group learning session in which each child will learn how the game is played, the proper etiquette and attire. They will learn about different parts of the golf course, different types of clubs and how to go golfing. Most importantly, everyone will learn how to hold the club, how to swing it and how to hit the ball in the direction they want!

Junior TeamGolf Program

TeamGolf is an ongoing, year round, instructional program for junior golfers of all skill levels who are enrolled in grade school through high school. Lessons are conducted in a group setting because it creates the ideal learning environment for kids to enjoy and excel at golf.

PGA Junior League

Little League for golf! Ages 7-13 (can't be 14 before August 1, 2024). Play on our team in fun team formats. A great program for new or beginning golfers. Each player receives Team Uniform shirt, golf caps, tote bag and tons of fun. One match almost every week during the summer and team practice sessions most weeks.

Golf Instruction Pricing- Lessons by appointment, additional information on our website

“NEW MEMBER PRICING FOR 2024 (lower than 2023)”

Also deduct your 10% member discount from these prices

| | | |
|--|---------|-------------|
| Adult 60 minute lesson | \$80 | was \$90 |
| Junior 30 minute lesson | \$35 | was \$40 |
| Junior 60 minute lesson | \$55 | was \$75 |
| Adult Small Series- (3) 60 min. lessons | \$225 | was \$225 |
| Junior Small Series- (3) 30 minute lessons | \$105 | was \$110 |
| 2 Hour Full Game Evaluation | \$180 | was \$225 |
| Adult Full Game Evaluation + Small Series | \$350 | was \$450 |
| Get Golf Ready (five 45 min. classes) | \$99 pp | was \$99 pp |

Golf Clinics, Classes and Groups Opportunities

We will have many options of additional instruction for Men, Women and Seniors. Feel free to check out www.swanlakeresort.com for more information or speak with any member of our Professional Staff.

Custom Fitting Options- Fittings are by appointment conducted by our Certified PGA Professional using dynamic fitting and FlightScope 3D Radar technology Launch Monitor maximizing the perfect fit and verifying personal specifications. **Fittings are scheduled by appointment.**

“NEW MEMBER PRICING FOR 2024 (lower than 2023)”

Also deduct your 10% member discount from these prices

| <u>Custom Club Fitting</u> | <u>Time Required</u> | <u>Fitting Cost</u> | <u>Was with purchase</u> |
|----------------------------|----------------------|---------------------|--------------------------|
| Driver, Fwy, Hybrid | 75 minutes | \$30 | \$75 |
| Irons & Wedges | 75 minutes | \$30 | \$75 |
| Only Wedges | 60 minutes | \$30 | \$45 |
| Putter | 30 minutes | \$30 | \$25 |
| Full Bag Fitting | 2 ½ Hours | \$75 | \$210 |
| Gap Analysis | 75 minutes | TDB | n/a |



Characteristics of Properly Fit Equipment

- Understand the importance of having the correct wedge lofts and bounces for the individual player, course conditions distances, and shot shaping requirements.
- Get the proper transition from Hybrid to Iron and fill in any gaps in yardages that can lead to extra shots.
- Get the perfect length, lie angle, grip, and shaft in your irons to maximize pin seeking.
- Dial in that Driver Fit by optimizing the highest possible ball speed, launch angle and angle of descent with proper spin rates

Fitting and Demonstrating Our Equipment

At Swan Lake Resort, we strongly encourage you to be properly fitted. It is simply too costly to your pocket book and performance on the course to leave club testing to chance or by just hitting a few balls while testing the equipment. That being said, we don't simply have demonstrator clubs around for guests to try. We have our vast array and expensive fitting components securely housed in the Golf Academy building. Hence the reason for the importance of a proper fit and fitting appointment.

Beginning in 2022, any equipment loaned from the Academy will be required to be returned to the Golf Shop the same day it is checked out. This will allow us to keep accurate track of our components and insure the all components are available during scheduled appointments

To Schedule or Discuss a Custom Fitting Appointment:

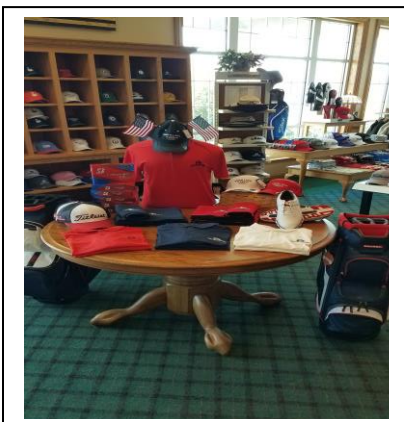
Please call 800-935-5616, ext. 722 for John Ericsson, Director of Instruction or ext. 753 to speak with any Golf Professional in the Golf Shop. Appointments may be scheduled in the Golf Shop

Discounts on Instruction

Swan Lake Resort Members receive 10% off Individual, Clinic and Group Instruction.

Golf Shop Information

Merchandise



The Award Winning Golf Shop carries a wide array of professional golf merchandise from the brands you know and can trust such as Adidas, Under Armour, Travis Mathew, Swannies, Bag Boy, Footjoy, New Balance, Ping, Titleist, Callaway, Cobra, Datrek, Bridgestone, Ahead and many others. We offer a complete assortment of great golf accessories as well. Swan Lake Resort Members earn a variety of discounts from 10 to 20% off. We hope to be your source for your golf gear needs. Our prices are competitive and often better with your discounts. If we don't feature something you desire, we can special order it for you. Your support of our Golf Shop is another way we foster a deeper relationship with you and the success of the Golf Shop is important to the overall health of the Resort.

Club Storage and Cleaning Services

We offer year round club storage. We will provide an identification bag tag for your bag and cleaning of your clubs. Your clubs will be brought to you upon arrival and cleaned and secured after departure. If you don't choose to utilize Club Storage Service our Outside Staff are generally available for a quick clean before you depart. They do their best to catch as many guests as possible. It is a part of their duties, but a small gratuity is always appreciated and they always split their gratuities. Bag Storage services can be obtained by speaking with any member of our Golf Professional Staff

Single Bag Storage is \$55

Double Bag Storage is \$75

Locker Rental

We offer yearly Locker Rental of ½ Lockers for \$75 and it can be secured by seeing any member of our Golf Professional Staff.

Handicaps and Score Posting **Please review regulations regarding handicaps instituted in 2021**

Included in your membership is a Golf Handicap which we do encourage you to establish.

Having an established and official handicap will be mandatory for participation in Club Events.

It also allows you to have friendly competition against fellow members of varying abilities. For a full description of a Golf Handicap, feel free to ask any of our Golf Professionals. In 2022, it **will only take three 18 holes scores to establish a handicap** although many more scores will be a truer representation of your ability. **You will be required to have an established handicap to compete in any event and if you continue to compete, you will be required to continue to post scores.** All scores at all times, unless you are designating them as practice scores, must be posted. Any 9 hole or 18 hole score can and must be posted as long as you are not rolling the ball. **In an effort for your handicap to be as accurate as possible, you should avoid rolling the ball as much as possible when playing and avoid designating them as practice scores.** You/Members will be responsible for posting your own scores on a designated computer in the Golf Shop. The process is easy and the Golf Shop staff will be able to assist you. Scores must be posted on the day they are shot. The new Handicap system updates on a daily basis. **To reiterate: 3 scores is required to compete and continued rounds/score entry is required to play in future events.** The method by which a Handicap is formulated is extremely well researched and proven to be effective.

Pace of Play

Our targeted goal for Pace of Play is between 4 hours 15 minutes to 4 hours 30 minutes. We do our best to monitor pace of play by utilizing the GPS system on the carts and through our Course Starters and Marshalls. From time to time, pace could be faster or slower depending the level of activity at the facility. Generally, course etiquette is that slower groups allow faster groups to play through at the next tee box. There are exceptions to this rule. *A group of 1 to 3 does not have the right away to play through a foursome in front if the course is extremely busy with groups stacked in front.* In the case of groups less than 4, we realize your pace could be faster than a threesome/foursome in front of you. As long as the group in front of you is maintaining a 9 hole pace at 2 hours 15 minutes or less, they are not considered to be playing slow or necessarily out of position. Also, playing through when the course is very busy in front of you will only slow pace even more. In these busy day situations, we recommend you find a minimum of 3 if not 4 players for your group or alter you pace accordingly to fit the situation. Your expectation should be for no longer than 2 hours and 15 minutes for 9 holes.

Course Care

Please see that divots on the fairways, ball marks on the greens and foot prints in the bunkers be repaired and smoothed out during the course of play. Carts should always remain on a path when provided, should remain 30 feet away from all tees and greens, should not drive between a bunker and green and should remain parked on the side of the green nearest the next tee area. We provide 4 sand bottles on each golf cart to be used to fill divots on the fairway and rough, but not on the tee boxes. If you run out of sand, we keep some at the bag drop area in front of the clubhouse and also replacement bottles at both #10 tees. We appreciate our members and that they take great care of the course often picking up the slack for others. Thank you for your help.

Dress Code

Golf shoes with softspikes or non spiked shoes are required. Men- shirts with collars and sleeves of the kind sold in the Golf Shop are required. Women- collared shirts are requested. Sleeveless shirts, shorts and skirts are allowed. We allow denim in the early and late parts of the golf season which we consider off-season. During the In-season which is generally mid May through mid September we will allow denim but, prefer no denim. Athletic gear, sweats, t-shirts, team jerseys are not permitted.

Golf Carts

Swan Lake Resort maintains a fleet of 130 gas Club Cars enabled with sophisticated GPS yardage screens. Carts may be rented for \$15 per person for 9 holes and \$25 per person for 18 holes.

Additional Annual Cart Pass options are available;

\$600 Annual Single Cart Pass (per person fee, unlimited cart use)

\$1000 Annual Couple Cart Pass (two person fee, unlimited cart use)

\$450 Twilight Member Annual Single Cart Pass (unlimited cart use only after 3pm only)

Some additional Club Rules relating to Golf Carts not mentioned above under **Course Care**.

1. Golf Carts may not be operated by anyone without a Driver's License
2. All occupants must be seated at all times. No more than 2 occupants per cart
3. No occupants may stand and be transported on the back of the golf carts at any time
4. Please use care when operating the GPS Touch Screen. Occupants of cart are responsible for any damage that may occur. The screens are very expensive to replace.
5. Occupants are responsible for any kind of damage to the cart or GPS. Cart Numbers are tracked to users daily. All carts are checked for damage daily

Reciprocal Arrangements with Other Clubs

While we endeavor to provide you access to Swan Lake Resort at all times, there may be the occasion when it's not possible or perhaps you desire something different for one round. We have arrangements with several facilities in the area. Please feel free to ask a member of our Golf Professional Staff for details. Allow us to make the arrangements for you.

Lodging at the Resort

A unique and pleasant feature of Swan Lake Resort is the diversity of our accommodations, including Deluxe hotel rooms and suites, fairway villas, beautiful log cabins, quaint cottages, a spacious fairway house, plus complete recreational vehicle pads. Swan Lake Resort boasts 90 welcoming hotel rooms, many of which offer golf course or poolside views. The fairway villas are modern and offer an outstanding view of the finishing hole of the Black course. The cottages and log cabins are a rustic getaway perfect for an escape from the norm. And the fairway house with back porch and yard is undoubtedly a home away from home. One of your Member Benefits is 30% off rack rates of lodging (does not apply to special rates). With such a wonderful array of options, you can enjoy a new experience with each stay. So come - stay awhile. We have a place just for you.



Hosting Groups

Swan Lake Resort offers 30,000 square feet of versatile, functional and beautiful meeting/banquet space, and we invite all of our members to take advantage of it. Consider using the Resort for your next event/business meeting or family function. Our Corporate Sales Manager can assist you with all arrangements. Whether it be a small board meeting, extravagant wedding, golf outing or a multi-day gathering with meetings, golf and catered functions, our team is eager to help. Members will get the full attention of our Banquet Supervisor and event staff. Call at any time to begin planning your next event.





Golf Outings at Swan Lake Resort • Reserve Your Date Today

The cornerstone of Northern Indiana’s most complete getaway is the Golf Club at Swan Lake Resort featuring two expertly maintained golf courses for you to choose from. Our Golf Professional Staff are dedicated to unmatched service and will assist with every detail from start to finish for your next corporate event, charity outing or private celebration. You and your guests play golf and we’ll take care of the rest.

Included in Golf Outing Packages

- 9 – 18 Holes of Golf
 - Cart and Green Fee
 - GPS Enabled Gas Golf Carts
 - On Course Contests
 - Course Set up
 - Skirted Registration Tables and Chairs
 - Place and Retrieve Sponsor Signs
 - Custom Cart Signs
 - Custom Scorecards
 - Professional Announcements, Scoring and Awards Presentation
 - Unlimited Practice Facility Use
 - Beverage Cart Service
 - Professional Bag Drop Service
- Inquire about adding a custom Golf Instructional Clinic

Events of Any Size

Swan Lake Resort can customize any event for an unforgettable experience.

- Corporate Outings
- Business Meetings
- Family Events Parties, Celebrations
- Bachelor/Bachelorette Parties
- Charity Events
- Reunions
- Retreats
- Banquets and Catering

Northern Indiana’s Premier Resort

Conveniently located in North Central Indiana near the intersection of US 31 and US 30

| | | | |
|--------------|-----------|------------|----------|
| Chicago | 92 miles | Ft. Wayne | 77 miles |
| Grand Rapids | 142 miles | South Bend | 25 miles |
| Indianapolis | 127 miles | NW Indiana | 52 miles |
| Lansing | 180 miles | Kalamzoo | 98 miles |

www.swanlakeresort.com | 5203 Plymouth Laporte Trail | Plymouth, IN 46563

Contact Director of Golf: Chad Hutsell

800.935.5616 ext 751 or 574.936.9798 | chutsell@swanlakeresort.com



2024 Swan Lake Resort Event Schedule

Starting Times are subject to change, always confirm with the Golf Shop

| <u>Date</u> | <u>Event Name</u> | <u>Eligibility</u> | <u>Start Time</u> |
|---|--|--|--|
| <u>February</u> | | | |
| Tuesday, February 14 th | Valentine's Day at ChopHouse Restaurant | | Call for Reservation |
| <u>March</u> | | | |
| Saturday, March 23 rd | Men's Club | Members Only | 10am Silver SG |
| Monday, March 18 th | Buddy Tournament Sign Up Opens | Members/Open | See Description Below |
| Monday, March 18 th | Individual Match Play Tourney Sign up | Open Members/Open | See Description Below |
| Thursday, March 28 th | Thursday Night Men's Opening Meeting | | Clubhouse Grill 5:30pm |
| Saturday, March 30 th | Men's Club | Members Only | 10am Silver SG |
| Sunday, March 31 st | TBD Easter Brunch Buffet | Open | 11am and 2pm Seatings, RSVP |
| <u>April</u> | | | |
| Monday, April 1 st | Monday Night Men's Opening Meeting | | Clubhouse Grill 5:30pm |
| Tuesday, April 2 nd | Tuesday Night Men's Opening Meeting | | TBD |
| Thursday, April 4 th | Thur. Night Men's League Begins | Open | 1 st Night for League |
| Saturday, April 6 th | Men's Club | Members Only | 10am Black SG |
| Mon Apr 8 th and Tues Apr 9 th | Greens Aerification | Course Closed both days for Greens Aerification | |
| Thursday, April 11 th | Thur. Senior Men's League Begins | Open | 1 st morning for League 9am |
| Thursday, April 12 th | Joe Curtis Thursday Evening 18 Hole Game begins each Thurs., | | ask for details in the Golf Shop |
| Saturday, April 13 th | Men's Club | Members Only | 10am Black SG |
| Sunday, April 14 th | Deadline to sign up for Buddy Tourney | | 5pm |
| Sunday, April 14 th | Deadline to sign up for Individual Match Play Tourney | | 5pm |
| Monday, April 15 th | Mon. Night Men's League Begins | Open | 1 st Night for League |
| Tuesday, April 16 th | Tues Night Men's League Begins | Open | 1 st Night for League |
| Saturday, April 20 th | Men's Club | Members Only | 9am Silver SG |
| Saturday, April 27 th | Men's Club | Members Only | 9:20am Silver SG |
| Sunday, April 28 th | Patriot Par 3 Challenge Tourney | Members Only | 10am Silver Shotgun |
| Monday, April 29 th | Mon. Senior Men's League Begins | Open | 1 st morning for League |
| Tuesday, April 30 th | Tues. Senior Men's League Begins | Open | 1 st morning for League |
| Weekly: Mon., Tues., Thur. Men's Lge; Mon. thru Fri Senior Lge; Joe Curtis Thur. Evening Choose Up | | | |
| <u>May</u> | | | |
| Wednesday, May 1 st | Sign Up begins for the Member Guest Invitational | | 8am in the Golf Shop |
| Wednesday, May 1 st | Wed Senior Men's League Begins | Open | 1 st morning of League |
| Wednesday, May 1 st | Wed. Night Women's Lea. Begins | Open | 1 st Night for League |
| Saturday, May 4 th | Men's Club | Members Only | 10am Black SG |
| Thursday, May 9 th | Ladies 18 Hole League Begins | Open | 10am TT's |
| Saturday, May 11 th | Men's Club | Members Only | 9am Silver SG |
| Sunday, May 12 th | TBD Mother's Day Brunch Buffet | Open | 11am and 2pm Seatings, RSVP |
| Friday, May 17 th | Couples 9 Hole Golf Night | Open | 5pm Tee-off |
| Saturday, May 18 th | Men's Club | Members Only | 8am Silver SG |
| Sunday, May 19 th | MAJOR Member/Member Tourney #1 | Member Only | 10am Black Shotgun |
| Monday, May 20 th | Cultivate Golf Outing | Large Outing, both courses closed until 5pm, call for availability | |
| Saturday, May 25 th | Men's Club | Members Only | 9am Black SG |
| Friday, May 31 st | Friday Night Shootout Series 1 | Members Only | 5:30 Silver Front Shotgun |
| Weekly: Mon., Tues., Thur. Men's Lge; Mon. thru Fri Senior Lge; Joe Curtis Thur. Evening Choose Up; Wed. Women's 9 Lge; Thur. Women's 18 Lge | | | |
| <u>June</u> | | | |
| Saturday, June 1 st | Men's Club | Members Only | 9:20am Black SG |
| Friday, June 7 th | Swan Lake Cup Draw for Teams | Members Only | Clubhouse Grill, approx. 7pm |

| | | | |
|---------------------------------|---|--------------|-----------------------------------|
| Saturday, June 8 th | Men's Club | Members Only | 8:40 to 9:30 #1 & #10 TT's Black |
| Sunday, June 9 th | MAJOR Swan Lake Cup Match Play Event | Members Only | 9am SG Silver, 1:50pm TT Black |
| Saturday, June 15 th | Men's Club | Members Only | 8:40 to 9:50 #1 & #10 TT's Silver |
| Saturday, June 15 th | NEW Couples 9 Hole Shootout | Members Only | 5pm Silver Shotgun |
| Friday, June 21 st | Couples 9 Hole Golf Night | Open | 5pm Tee-off |
| Saturday, June 22 nd | Men's Club | Members Only | 10:10am Silver SG |
| Saturday, June 29 th | Men's Club | Members Only | 10:40am Black TT |

**Weekly: Mon., Tues., Thur. Men's Lge; Mon. thru Fri Senior Lge; Joe Curtis Thur. Evening Choose Up
Wed. Women's 9 Lge; Thur. Women's 18 Lge**

July

| | | | |
|---------------------------------|--|-------------------------|----------------------------------|
| Thursday, July 4 th | Flag Day Event | Open | All Day- see description below |
| Friday, July 5 th | Friday Night Shootout Series 2 | Member Only | 4:30 Seniors & 5:30pm Regular BF |
| Saturday, July 6 th | Men's Club | Members Only | 8:30am Black SG |
| Saturday, July 6 th | Couples Tailgater Golf Event | Open | 5:45pm Silver Shotgun |
| Saturday, July 13 th | Men's Club | Members Only | 8:10am #1 & #10 TT's, Black |
| Sunday, July 14 th | Parent Child Tourney | Members, Guests, Family | Afternoon TT's TBD |
| Friday, July 19 th | Couples 9 Hole Golf Night | Open | 5pm Tee-off |
| Saturday July 20 th | MAJOR The Invitational Member Guest | Members and Guests | 10:30am Black TT's |
| Sunday, July 21 st | MAJOR The Invitational Member Guest | Members and Guests | 7:30am Silver TT's |
| Friday, July 26 th | Friday Night Shootout Series 3 | Members Only | 5:30pm Silver Front Shotgun |
| Saturday, July 27 th | Men's Club | Members Only | 11am TT's Black |
| Sunday, July 28 th | Junior Club Championship | Open | TT's in afternoon |

**Weekly: Mon., Tues., Thur. Men's Lge; Mon. thru Fri Senior Lge; Joe Curtis Thur. Evening Choose Up
Wed. Women's 9 Lge; Thur. Women's 18 Lge**

August

| | | | |
|-----------------------------------|--|---|----------------------------------|
| Friday, August 2 nd | Night Golf | Open | 7:30 Dinner, 9pm Golf |
| Saturday, August 3 rd | Men's Club | Members Only | 9am Silver SG |
| Saturday, August 10 th | Men's Club | Members Only | 7:30am Silver SG |
| Sunday, August 11 th | NEW Couples Trivia Golf Event | Members Only | 5 or 5:30pm Silver Front Shotgun |
| Friday, August 16 th | Couple 9 Hole Golf Night | Open | 5pm Tee-off |
| Saturday, August 17 th | MAJOR Swan Lake Club Championship | Member Only | 10:100am Black TT's |
| Sunday, August 18 th | MAJOR Swan Lake Club Championship | Member Only | 7am Silver TT's |
| Friday, August 23 rd | Friday Night Shootout Final | Member Only | 5pm Black Front Shotgun |
| Saturday, August 24 th | Men's Club | Members Only | 10am Silver SG |
| Sunday, August 25 th | MAJOR Member/Member Tourney #2 | Members Only | 9am Black Shotgun |
| Friday, August 30 th | The Coach Teall Memorial Outing | Large 1 course outing, call for course availability | |
| Saturday, August 31 st | Men's Club | Members Only | 9:30am Black SG |

**Weekly: Mon., Tues., Thur. Men's Lge; Mon. thru Fri Senior Lge; Joe Curtis Thur. Evening Choose Up
Wed. Women's 9 Lge; Thur. Women's 18 Lge**

September

| | | | |
|--------------------------------------|------------------------------|---------------------|-----------------------|
| Saturday, September 7 th | Men's Club | Members Only | 11:30am Silver TT's |
| Sunday, September 8 th | Couples Championship | Open | TBD- afternoon TT's |
| Saturday, September 14 th | Men's Club | Members Only | 10:20 Black SG |
| Sunday, September 15 th | Thursday Men's League Outing | League Players Only | 1:30pm Silver Shotgun |
| Friday, September 20 th | Couples 9 Hole Golf Night | Open | 5pm Tee-off |
| Saturday, September 21 st | Men's Club | Members Only | 10am Silver SG |
| Sunday, September 22 nd | Tuesday Men's League Outing | League Players Only | 1:30pm Black Shotgun |
| Saturday, September 28 th | Men's Club | Members Only | 10:10am Black SG |
| Sunday, September 29 th | Monday Men's League Outing | League Players Only | 1:30pm Silver Shotgun |

Weekly: Mon. and Thur. Men's Lge; Mon. thru Fri. Senior Lge; Wed. Women's 18 Lge; Joe Curtis Thur. Evening Choose Up

October

| | | | |
|--|---------------------|---|--------------------|
| Saturday, October 5 th | Men's Club | Members Only | 10am Silver SG |
| Sunday, October 6 th | Big Hole Scramble | Open | 1pm Black Shotgun |
| Mon Oct 7 th and Tues Oct 8 th | Greens Aerification | Course Closed both days for Greens Aerification | |
| Saturday, October 12 th | Men's Club | Members Only | 10am Black SG |
| Saturday, October 19 th | The Gauntlet | Members Only | Noon Black Shotgun |

December

| | | | |
|------------------------------------|------------|---|---------------------|
| Saturday, December 7 th | TBD | Tentative Member Appreciation/Awards Dinner | Member Only, 7-10pm |
| Sunday, December 31 st | | New Year's Eve Party- RSVP well in advance required | Open, Time TBD |

2024 Men's, Women's and Couples Golf Leagues

NEW for 2024 Couples League and Events: **SEE BLUE TITLES BELOW**

LEAGUES AT SWAN LAKE RESORT

“NEW in 2023” COUPLES Friday Night Couples 9 Hole League- relaxed rules, fun, low cost, low pressure. Enjoy golf, camaraderie and optional dinner in the Grill or at ChopHouse

- ❑ **Dates:** Every third Friday of the month: 5-17-24, 6-21-24, 7-19-24, 8-16-24 9-20-24
- ❑ **Sign Up:** In the Golf Shop each week no later than the day before at 5pm
- ❑ **Time:** Teetimes begin at 5pm
- ❑ **Eligibility:** Open to all players, Men play white tees, women play from the Red tees
- ❑ **Format:** 5 different fun and unique formats to choose from
- ❑ **Teams:** Husband and wife teams. Be paid and ready for golf by 4:45pm
- ❑ **Entry Fee:** Member w/o Cart Pass \$20, Member with Cart Pass \$5, Non-Member \$29; all of these are per person
- ❑ **Fees Include:** cart fees where appropriate and prize fund
- ❑ **Events:** Prizes for the game and proxies such as Straight Drive, Closest Chip, Longest Putt

“7th Year” Monday Night 9 Hole Men's League “Possibly Accepting Teams”

- ❑ **Date:** Opening Meeting 4-2 at 5:30, 1st night 4-15-24 & ends 9-16-24, Season Ending Outing 9-29-24, 1:30pm Silver SG
- ❑ **Sign Up:** Contact League Director, Chad Hutsell in the Golf Shop, chutsell@swanlakeresort.com
- ❑ **Time:** Teetimes every Monday evening from 4:30 to 5:30pm
- ❑ **Eligibility:** Open to all players, we will establish your league handicap, substitute players for sub list always welcome
- ❑ **Format:** 2 man teams who will play a weekly match against another 2 man team, Net Game, Points for Individual head to head matches that goes towards an overall Team Total of points
- ❑ **Teams:** Pick your own 2 man teams
- ❑ **Entry Fee:** \$50 League Dues and \$20 Skins Dues per player, weekly fees for Non-members are \$15 to walk or \$24 to ride
- ❑ **Events:** TBD

Wednesday Morning 18 Hole Senior Men's League- Accepting Players (Sprig Seniors)

- ❑ **Date:** Play begins 5-1-24 and ends on 8-28-24
- ❑ **Sign Up:** In the Golf Shop every Wednesday 30 minutes before the scheduled ttime
- ❑ **Time:** TT's every Wed. morning, Ttimes vary and there is a schedule be paid and ready any Wednesday 10 min prior to TT
This group also plays every Monday and Friday on a scheduled basis
- ❑ **Eligibility:** Open to all players, we will establish you an official handicap
- ❑ **Format:** Team Quota Game but all players play their own ball in regular stroke play golf
- ❑ **Entry Fee:** Weekly fees for Non-members are weekly senior golf rates, \$29 off-season and \$35 in-season
- ❑ **Events:** Depends on the weekly game play. For more information, contact the Golf Shop for details

“4th Year” Thursday Morning 18 Hole Women's League- Accepting Players

- ❑ **Date:** Play begins 5-9-24 and ends on 9-19-24
- ❑ **Sign Up:** In the Golf Shop every Thursday 30 minutes before the scheduled ttime
- ❑ **Sign Up:** If you wish to play, please contact League Director: Jeni Hirschy, 574-780-5492, jehirschy@gmail.com
- ❑ **Time:** Ttimes every Wed. morning, TT's typically at 10am but can vary, be present, paid and ready 30 min prior to TT
- ❑ **Eligibility:** Open to all players, we will establish you an official handicap
- ❑ **Format:** Team Quota Game but all players play their own ball in regular stroke play golf
- ❑ **Entry Fee:** Weekly fees for Non-members are weekly senior golf rates, \$29 off-season and \$35 in-season
- ❑ **Events:** Depends on the weekly game play. For more information, contact the Golf Shop for details

Swan Lake Resort Thursday Night 9 Hole Men's League “Possibly Accepting Teams”

- ❑ **Date:** Play begins 4-4-24 and ends on 9-12-24, Season Ending Outing 9-15-24 at 1:30pm Silver SG
- ❑ **Sign Up:** Contact League Director, Ryan Steele in the Golf Shop, rsteale@swanlakeresort.com
- ❑ **Time:** Teetimes every Thursday evening from 4:30 to 5:30pm
- ❑ **Eligibility:** Open to all players, we will establish your league handicap, League Meeting 3-28-24, 6pm, Clubhouse Grill
- ❑ **Format:** 2 man teams playing against 2 man teams, Net Game, Match Play, Points for Individual and Team Matches
- ❑ **Teams:** Pick your own 2 man teams
- ❑ **Entry Fee:** \$60 League Dues and \$20 Skins Dues per player, weekly fees for Non-members are \$15 to walk or \$24 to ride
- ❑ **Events:** Weekly Skins, Proximities and Low Gross/Low Net

Tuesday Night 9 Hole Men's League "Possibly Accepting Teams" contact League Chairman

- ❑ **Date:** Play begins 4-16-24 and ends on 8-27-24, Playoffs begin 8-28-24
- ❑ **Sign Up:** Contact League Director, Dave Pentelow at 574-532-2647, pentelow76@gmail.com, space is limited, call asap
- ❑ **Time:** Teetimes every Tuesday evening from 4:30 to 5:30pm, League Closing Outing & Banquet 9-22-24 at 1:30 Black SG
- ❑ **Eligibility:** Open to all players, we will establish your league handicap
- ❑ **Format:** 2 man teams playing against 2 man teams, Net Game, Points for Individual and Team Matches
- ❑ **Teams:** Pick your own 2 man teams
- ❑ **Entry Fee:** \$44 League Dues and \$20 Skins Dues per player, weekly fees for Non-members are \$15 to walk or \$24 to ride
- ❑ **Events:** Weekly Skins

Swan Lake Resort Thursday Morning 9 Hole Senior Men's League- Accepting Players

- ❑ **Date:** Play begins 4-11-24 and ends on 9-19-24
- ❑ **Sign Up:** Be present and check into the Golf Shop by 8:40am each Thursday Morning, League Chairman: Chad Hutsell
- ❑ **Time:** Teetimes every Thursday morning at 9am Shotgun, be paid and ready for golf any Thursday by 8:40am
- ❑ **Eligibility:** Open to all players, we will establish your league handicap
- ❑ **Format:** Individual players- golf shop will determine weekly formats of 2, 3 or 4 person teams, Net Games
- ❑ **Teams:** NA
- ❑ **Entry Fee:** \$25 for season League Dues, weekly fees for Non-members are \$15 to walk or \$24 to ride
- ❑ **Events:** Depends on the weekly game play

Tuesday Morning 9 Hole Senior Men's League- Accepting Players

- ❑ **Date:** Play begins 4-30-24 and ends on 9-24-24
- ❑ **Sign Up:** In the Golf Shop by 4-30-24 and weekly by 5pm the day before each event
- ❑ **Time:** Teetimes every Tuesday morning at 9am Shotgun, be paid and ready for golf any Tuesday by 8:40am
- ❑ **Eligibility:** Open to all players, we will establish your league handicap
- ❑ **Format:** Individual players- league chairman will determine weekly formats of 2, 3 or 4 person teams, Net Games
- ❑ **Teams:** NA
- ❑ **Entry Fee:** Weekly fees for Non-members are \$15 to walk or \$24 to ride
- ❑ **Events:** Depends on the weekly game play. For more information, contact League Director, John Helphrey at 574-210-3933 or email at helphreyjohn@gmail.com

Swan Lake Resort Wednesday Women's 9 Hole League- Accepting Players

- ❑ **Date:** Play begins 5-1-24 and ends on 9-4-24
- ❑ **Sign Up:** If you wish to play, please contact Contact League Director, Jeni Hirschy at 574-780-5492, jehirschy@gmail.com
- ❑ **Time:** Teetimes every Wednesday evening at 4:30 pm
- ❑ **Eligibility:** Open to all players, they will establish your league handicap
- ❑ **Format:** Individual players- League Director will determine fun weekly formats
- ❑ **Teams:** NA
- ❑ **Entry Fee:** \$20 League Dues, weekly fees for Non-members are \$15 to walk or \$24 to ride
- ❑ **Events:** Depends on the weekly game play

GOLF EVENTS AND TOURNAMENTS

The MAJORS at Swan Lake Resort

Member/Member Sunday, May 19th

The Swan Lake Cup Sunday, June 9th

The Invitational Member Guest Saturday and Sunday, July 20th and 21st

The Club Championship Saturday and Sunday, August 17th and 18th

Member/Member Sunday, August 25th

Player of the Year Award

Every year we evaluate our Membership Programs and events for you. In 2018 and 2019 we are offered fresh new events and incentive to play in those events. **They continue in 2024 and it's going to be the most exciting season ever at Swan Lake Resort.** Therefore we are continuing the Player of The Year Race which will encompass the following events:

| | | |
|-----------------------------|-------------------------------|----------------------------------|
| Final Men's Club Standings` | Swan Lake Cup Ryder Cup Event | Buddy Tournament |
| Member Guest Invitational | Club Championship | Individual Match Play Tournament |
| May Member/Member Tourney | Sept Member/Member Tourney | |

We also continue with a Men's Club point system, Champion and awards as in the past. We are instituting point values based on participation and performance in these other Club events to add up alongside your POY points awarded for your year-end Men's Club standings. All of the points lead to a Player of the Year title featuring additional Golf Shop Credit and the coveted Championship Belt. The point values for Men's Club and the other events are below. We hope you are excited about this new award and events and that they add value to your membership and enjoyment of Swan Lake Resort. We look forward to an exciting points race!

| Men's Club POY Pts at Seasons end | Individual Match Play | Mmbr Guest & Mmbr/Mmbr's | Swan Lake Cup Ryder Cup | Club Chmpshp Points Per Flight | Buddy Tournament |
|--------------------------------------|--------------------------|-----------------------------|----------------------------|-----------------------------------|---------------------|
| Based on your | 2 pts for playing | 1 pt for playing | 2 pts for playing | 1 pt for playing | 2 pts for playing |
| Final Men's Club | 6 pts Winner | 5 | 3 pts per player | 5 | 6 ea. Winners |
| Position | 5 pts Runner Up | 4 | on winning team | 4 | 5 ea. Runner Ups |
| First 6 | 4 pts ea. Semis | 3 | 0 pts for match | 3 | 4 ea. Semis |
| Second 5 | 3 pts ea. Quarters | 2 | results | 2 | 3 ea. Quarters |
| Third 4 | | | | | Losers Bracket |
| Fourth 3 | | | | | Winners 2pt each |
| Fifth 2 | | | | | |
| Sixth 1 | | | | | |

Swan Lake Men's Club all season long

The Swan Lake Men's Club are regularly scheduled events designed to provide a way for players to find a game, play a structured format for prizes and foster camaraderie. The tee time varies but is typically at 9am. You may enter events one at a time if you wish but the upfront entry fee will provide a cost savings to the player. Entry fee is \$220 to cover the entire season. If you choose enter any Men's Club date individually, the entry fee is \$20. Entry fees build the prize fund to be paid out completely throughout the season as Golf Shop credit. Player must be signed up with the Golf Shop 1 hour prior to tee off and present, paid and ready for golf 10 minutes prior to teetime. **Starting Times and Formats are subject to change, always confirm with the Golf Shop and pay close attention to text and email alerts. Also, watch your early season email for complete details on Men's Club and new sign up procedures.**

| | | | | | | | |
|----------|--------|---------|---------------------------------|--------------|--------|---------|---------------------------------------|
| March 23 | Silver | 10am | Individual Quota | June 29 | Black | 10:40am | Lone Ranger |
| March 30 | Silver | 10am | 2 Best Ball Net (Stableford) | July 6 | Black | 8:30am | 3 BB 5's, 2BB 4's, 1 BB 3's |
| April 6 | Black | 10am | 2 Man- 9 a Man Net | July 13 | Black | 8:10am | TT |
| April 13 | Black | 10am | Lone Ranger | July 27 | Black | 11am | TT Team Quota |
| April 20 | Silver | 9am | 1 Gross + 1 Net | August 3 | Black | 9am | 2 Man- 9 a Man Net |
| April 27 | Black | 9:20am | 2 Man Best Ball Net | August 10 | Silver | 7:30am | Individual Quota |
| May 4 | Black | 10am | 3 Best Ball Net | August 24 | Silver | 10am | Six, Six, Six |
| May 11 | Silver | 9am | Individual Quota | August 31 | Black | 9:30am | 1 Gross + 2 Net |
| May 18 | Silver | 8am | Four a man | September 7 | Silver | 11:30am | TT Waltz |
| May 25 | Black | 9am | Waltz | September 14 | Black | 10:20am | Lone Ranger |
| June 1 | Black | 9:20am | 1 Gross + 2 Net | September 21 | Silver | 10am | Playoffs- 2 Man BB Net |
| June 8 | Black | 8:40am | TT 1 BB 5's, 2 BB 4's, 3 BB 3's | Sept 28 | Black | 10:10am | TT Playoffs- 2Man BB Net (Stableford) |
| June 15 | Silver | 8:40am | TT 2 Man BB Net (Stableford) | October 5 | Silver | 10am | Playoffs- Individual Quota |
| June 22 | Silver | 10:10am | Individual Quota | October 12 | Black | 10am | Playoffs- Individual Quota |

Swan Lake Resort Buddy Tournament all season long

- ❑ **Sign Up:** In the Golf Shop anytime up to 5pm 4-14-24, Golf Shop will determine match schedule on 4-15-24
- ❑ **Time:** Make your own teetime before posted match deadline date, No matches will extend beyond deadline date
- ❑ **Eligibility:** Open to all players with an official handicap, **must post scores for handicap between matches**
- ❑ **Format:** Net best ball match play with your partner against another 2 person team, 100% handicap. **Continuing from 2019** all players receive their full handicap but get their difference from the lowest player in the match. **Continuing this year is the secondary bracket for the extra opportunity to play an additional match (and more if you continue to win) if you lose your first match.** This is not a bracket that feeds back into the winner's bracket. It is its own bracket.
- ❑ **Teams:** Make your own 2 person team
- ❑ **Entry Fee:** \$25 per player, normal cart fees and green fees apply to each match/teetime
- ❑ **Rules:** Play by assigned dates or matches will be decided by a coin toss. No matches will extend beyond deadline

Individual Match Play Tournament **all season long**

- ❑ **Sign Up:** In the Golf Shop anytime up to 5pm 4-14-24, Golf Shop will determine match schedule on 4-15-24
- ❑ **Time:** Make your own teetime before posted match deadline date, No matches will extend beyond deadline date
- ❑ **Eligibility:** Members Only with an official handicap, **must post scores for handicap between matches**
- ❑ **Format:** Net best ball match play against your opponent's net best ball, based off 100% handicap, lowest handicap player becomes a zero and opponent gets the difference. Example 5 handicap versus 15 handicap, 5 becomes 0 and 15 becomes a 10
- ❑ **Teams:** Individual tournament, schedule your own teetimes and matches
- ❑ **Entry Fee:** \$15 per player, normal cart fees apply to each match/teetime
- ❑ **Rules:** Play by assigned dates or matches will be decided by a coin toss. No matches will extend beyond deadline

Friday Night Shootout Series **all season long**

- ❑ **Date:** May 31st Silver Front, June 28th Black Front, July 26th Silver Front, August 23rd Black Front
- ❑ **Sign Up:** In the Golf Shop prior to each event, **Limited field event, sign up early**, August 23rd entry will be by qualification
- ❑ **Time:** 5:30 Shotgun start except August 23rd which will be a 5pm SG and June 28th Senior Event is a 4:30 start
- ❑ **Eligibility:** Members Only with established official handicap
- ❑ **Format:** All players tee off together eliminating players each hole, Based on player's net score at 90% handicap
- ❑ **Teams:** No teams, individual play; players earn cumulative points for participation and performance over the first 3 event and earn an invite to the final event, **The July 26th event will be a 2 man event. The July 5th event will feature a Senior Only age 60 and over FNS at 4:30pm along with the standard event at 5:30pm.** Points for the Senior FNS will not count towards the final
- ❑ **Entry Fee:** \$25 per event, normal cart fees apply, no entry fee to final event, all money paid in Golf Shop Credit
- ❑ **Events:** Payouts at each event for 1st, 2nd, 3rd; Parimutuel Betting at each event

“SUPER FUN AND UNIQUE EVENT” Patriot Par 3 Challenge

- ❑ **Date:** 4-28-24
- ❑ **Sign Up:** In the Golf Shop by 5pm 4-22-24, 5pm
- ❑ **Time:** 9:30am Shotgun on Silver
- ❑ **Eligibility:** Open to Members Only
- ❑ **Format:** 2 Man Scramble, 18 holes as par 3's, Teams will be flighted
- ❑ **Entry Fee:** \$30 per Member to include golf fees, prizes and **a Folds of Honor donation**
- ❑ **Events:** Prizes and proximities for Golf Shop Credit, F&B specials, Celebrate Military heritage, support Folds of Honor

7th Annual Member/Member Tourneys #1 and #2 **MAJORS**

- ❑ **Date:** **#1: 5-19-24** and **#2: 8-25-24**
- ❑ **Sign Up:** In Golf Shop by 5pm 5-17-24 and 8-23-24
- ❑ **Time:** 5-19-24 10am SG Black, 8-25-24 9am SG Black
- ❑ **Eligibility:** Swan Lake Members only. 2 man teams
- ❑ **Format:** 5-19-24 2 man Pinehurst Alternate Shot, 8-25-24 2 man 1 BB Net 90% handicap
- ❑ **Entry Fee:** \$30 per player for the event
- ❑ **Events:** Prizes and proximities for Golf Shop Credit and skins for cash

7th Annual Swan Lake Cup Member Match Play Event- **MAJOR**

- ❑ **Date:** 6-9-24
- ❑ **Sign Up:** In Golf Shop on 6-5-24 by 5pm, **Limited Field event, sign up early, space is limited**
- ❑ **Draw Teams:** In Clubhouse Grill 6-7-24 at 6:30pm
- ❑ **Time:** 9am Silver Shotgun and 1:50pm Black TT's
- ❑ **Eligibility:** Swan Lake Members- two 16 player teams TBD
- ❑ **Format:** (1) 9 hole 4 Ball matches, (1) 9 hole Foursome matches, (1) 18 Holes Singles
- ❑ **Entry Fee:** \$30 per player for the event
- ❑ **Events:** Prizes and proximities for Golf Shop Credit

“NEW” 1st ANNUAL Couples Shootout

- ❑ **Date:** 6-15-24
- ❑ **Sign Up:** In the Golf Shop by 5pm 6-11-24 Limited Space Available- call right away to sign up
- ❑ **Time:** 5pm Shotgun Start on Silver Front 9
- ❑ **Eligibility:** Open to All Couples- must have a golf handicap
- ❑ **Format:** 2 persoon Alternate Shot format over 9 holes. Decide who tees off odd and even. With handicap. 1 team per hole will be eliminated until we come to the last hole with 2 Couples left playing on the final hole
- ❑ **Entry Fee:** \$40 per Couple for entry fee, Additional golf fees for Non-Members is \$24 per person
- ❑ **Concept:** **The Men have their Friday Night Shootout- now the Couples have theirs. This will be a blast!**

4th of July Flag Day Tourney

- ❑ **Date:** 7-4-24
- ❑ **Sign Up:** In the Golf Shop or on the tee that day
- ❑ **Time:** Play at your own teetime
- ❑ **Eligibility:** Open to all players with a verifiable handicap
- ❑ **Format:** Play your own ball, add your handicap to par and plant your flag where your last stroke ends
- ❑ **Entry Fee:** \$10 per player, prizes paid in Golf Shop credit

“The top summer event of 2023 returns” **COUPLES TAILGATER GOLF EVENT**

- ❑ **Date:** 7-6-24
- ❑ **Sign Up:** In the Golf Shop by 5pm 6-30-24
- ❑ **Time:** 4:45 Pre-game Happy ½ hour, 5:30pm Shotgun 9 holes, optional Dinner and Entertainment at approx. 8:30pm
- ❑ **Eligibility:** Open to All Couples
- ❑ **Format:** 4 person (2 couples) teams, 9 Holes Scramble
- ❑ **Entry Fee:** \$60 per Member couple to include golf fees, prizes, dinner, entertainment
- ❑ **Events:** Happy ½ Hour, Putting Contest, Cornhole, Hors D’ Oeuvres on course, Drink Specials, Golf, Proxies, Night Chipping Contest, Golf Awards and proximities for Golf Shop Credit, ala carte dinner after golf

The Invitational Member Guest **MAJOR NEW SIGN UP PROCEDURES**

- ❑ **Date:** 7-20-24 and 7-21-24- LIMITED SPACE AVAILABLE
- ❑ **Sign Up:** Continuing in 2024- no early sign ups. Sign up begins at 8am on Wednesday May 1st either in person or by calling the GolfShop. We will accept reservations until the sign up is full or deadline of 5pm 7-14-24
- ❑ **Time:** 7-20 10:30am Black TT, 7-21 7:00am Silver TT, 9 hole Extra Event 7-20-24 at 5pm, Dinner approx. 8pm
- ❑ **Eligibility:** Teams of 1 member and 1 guest each with an established handicap preferably or teams of 2 members
- ❑ **Format:** 36 holes, 18 holes Pinehurst Alternate Shot and 18 Holes 2 Man 1 Best Ball Net, 80% handicap
- ❑ **Entry Fee:** \$120-\$125 per player to include Steeplechase event, golf fees, prizes, breakfast and dinner
- ❑ **Events:** Team prizes, 9 hole Event and proximities for golf shop credit; optional pari-mutuel betting and skins for cash

3rd Annual Parent (Grand Parent)/Child Tourney

- ❑ **Date:** 7-14-2024
- ❑ **Sign Up:** Call the Golf Shop by 5pm 7-10-24 to sign up
- ❑ **Time:** Golf Shop assigns tee-times to start at approx. 2:30 p.m., tee-times are final as assigned
- ❑ **Eligibility:** Open to all Parents/Grand Parents and Children/Grand Children of all ages- members and non-members
- ❑ **Format:** 2 person scramble in different age divisions
- ❑ **Teams:** 1 Parent/Grand Parent and 1 Child/Grand Child
- ❑ **Entry Fee:** \$20.00 per team entry fee
- ❑ **Green Fees:** none to Members, 9 Hole Cart Fees only (no green fee) to non-members which is \$15 for adults and \$8 for children
- ❑ **Prizes:** Prizes and Games TBD

2nd Annual Junior Club Championship

- ❑ **Date:** 7-28-24
- ❑ **Sign Up:** In Golf Shop by 5pm 7-21-24
- ❑ **Time:** TT’s in the afternoon beginning at approx. 1pm, Putting Obstacle Course Contest before golf
- ❑ **Eligibility:** Open to All Junior Members, Employees and participants in The Golf Academy Junior Program
- ❑ **Format:** Boys and Girls Age Groups: Age 16 through College 18 Holes, Age 13-15 9 Holes, Age 10-13 Holes from 150-250 yards and Age 9 and under 6 holes from 100 to 200 yards
- ❑ **Format:** Stroke play in Age Groups
- ❑ **Entry Fee:** \$18 per child includes prizes and cookout
- ❑ **Events:** Putting Obstacle Course before your TT, Proxies, Golf, Dinner, Prizes

All American Tailgate Night Golf Event

- ❑ **Date:** 8-2-24
- ❑ **Sign Up:** In Golf Shop by 5pm 7-28-24
- ❑ **Time:** 7:30 Putting Contest, Cart Decorating, Cash Bar, All American BBQ Dinner, 9pm Golf
- ❑ **Eligibility:** **Open to All Players but Members will have priority to sign up through noon on Sunday, July 2nd**
- ❑ **Teams:** 2-somes or 4-somes but format is a 4 player Scramble
- ❑ **Format:** 9 Hole 4-some Scramble
- ❑ **Entry Fee:** \$55 per player to include prizes, golf fees, dinner and night golf supplies

“NEW” Couples Trivia Golf Night

- ❑ **Date:** 8-11-24
- ❑ **Sign Up:** In the Golf Shop by 5pm 8-4-24
- ❑ **Time:** 5 or 5:30pm Shotgun 9 holes, time TBD, Dinner and Entertainment at approx. 8pm
- ❑ **Eligibility:** Open to All Couples
- ❑ **Format:** 4 person (2 couples) teams, 9 Holes Scramble, 9 holes and 9 trivia questions, Different point values for each of the trivia questions, Scramble score minus trivia question point total = net scramble team score
- ❑ **Entry Fee:** \$120 per Member couple to include golf fees, prizes, dinner, possible entertainment
- ❑ **Events:** Prizes and proximities for Golf Shop Credit

FOR ALL PLAYER IN 2024 Swan Lake Club Championship MAJOR

- ❑ **Date:** 8-17-24 and 8-18-24
- ❑ **Sign Up:** In the Golf Shop by 5pm 8-11-24
- ❑ **Time:** 8-17-24 10:10am TT Black and 8-18-24 7am TT Silver
- ❑ **Eligibility:** Members Only-all Men, Women and Seniors. Men in various flights, Men must choose standard or Senior, cannot play both
- ❑ **Format:** Stroke Play- Overall Gross winners in flights
- ❑ **Entry Fee:** \$20 Entry Fee per player paid completely in Golf Shop Credit
- ❑ **Events:** Golf Shop Credit pay out to winners and skins for cash

“NEW in 2023” COUPLES CHAMPIONSHIP

- ❑ **Date:** 9-8-24
- ❑ **Sign Up:** In the Golf Shop by 5pm 9-2-24
- ❑ **Time:** TT Black at approx. 2pm
- ❑ **Eligibility:** Open to any Couples with an established handicaps- golf shop can assist with this process
- ❑ **Format:** Net Stroke Play Event: 2 man 1 BB Net, 9 and 18 Hole Divisions
- ❑ **Entry Fee:** \$20 Entry Fee per player paid completely in Golf Shop Credit
- ❑ **Events:** Golf Shop Credit pay out to winners, Proxies, possible Dinner after

The Big Hole Scramble

- ❑ **Date:** 10-6-24
- ❑ **Sign Up:** In the Golf Shop by 5pm 9-28-24
- ❑ **Time:** 1pm Shotgun Black Course
- ❑ **Eligibility:** Open to all players with an established handicap
- ❑ **Format:** 4 person gross scramble, may include 1 Pro per group maximum, combined minimum team handicap of 22
- ❑ **Teams:** 1 Pro and 3 Amateurs or 4 Amateurs
- ❑ **Entry Fee:** \$60 Members and \$100 non-members Includes golf fees, prizes for Golf Shop credit, proximities and lunch
- ❑ **Events:** Optional \$40 Team Skins for cash payout

The Gauntlet- a unique event sure to be a lot of fun and something different.

- ❑ **Date:** 10-19-24
- ❑ **Sign Up:** In the Golf Shop by 5pm 10-16-24
- ❑ **Time:** Noon Shotgun
- ❑ **Eligibility:** Member Only
- ❑ **Format:** 18 holes with 18 different games/formats- Conquer the Gauntlet!!!
- ❑ **Teams:** You pick your own 2 man team, event will be flighted based on combined handicap of the 2 players
- ❑ **Entry Fee:** \$25 Entry Fee per player, payout out in Golf Shop Credit
- ❑ **Events:** Optional Team Skins within flight for cash payout

2023 Additional Important Social Functions- TBD- call Resort for details

- 2-14-24 Valentines Dinner Special
- 3-31-24 Easter Brunch Buffet TBD, 11am and 2pm Seatings, RSVP Required
- 5-12-24 Mother's Day Brunch Buffet TBD, 11am and 2pm Seatings, RSVP Required
- 12-31-24 New Year's Eve Bash, 7pm to 1am, RSVP Required

2024 Tentative Email Schedule

These are the projected dates for reminder emails- NOT DATES OF EVENTS

| | | | | | |
|-----------|--------|----------------------------|-----------|------|--------------------------------|
| 1/6/2024 | Friday | Grip Email | 5/3/2023 | Wed | Couples League |
| 1/24/2024 | Wed | Monday League 1st Email | 5/9/2024 | Thur | Course Closed Cultivate Outing |
| Early Mar | TBD | Course Opening Email | 5/13/2024 | Mon | Friday Night Shootout 1 |
| Early Mar | TBD | Callaway Loyalty | 5/21/2024 | Tues | Swan Lake Cup |
| Early Mar | TBD | Taylor Made Loyalty | 5/22/2024 | Wed | Couples Shootout |
| Early Mar | TBD | Titleist Loyalty | 6/10/2024 | Mon | Friday Night Shootout 2 |
| 3/4/2024 | Tues | Sprig Senior League | 6/11/2024 | Tues | Couples Golf Tailgater Event |
| 3/5/2024 | Tues | Thursday League | 6/17/2024 | Mon | Night Golf |
| 3/6/2024 | Wed | Monday League | 6/18/2024 | Tues | Flag Day |
| 3/10/2024 | Wed | Men's Club | 6/20/2024 | Thur | Fireworks Email |
| 3/16/2024 | Sat | Individual Match Play | 7/2/2024 | Tues | Juniors Championship |
| 3/17/2024 | Sun | Buddy Challenge Tourney | 7/5/2024 | Fri | Parent Child Tourney |
| 3/19/2024 | Tues | All Senior League Email | 7/7/2024 | Sun | Friday Night Shootout 3 |
| 3/24/2024 | Sun | Player of the Year | 7/16/2024 | Tues | Couples Trivia Golf Event |
| 3/31/2024 | Sun | Spring Greens Aerification | 7/23/2024 | Tues | Club Championship |
| 4/2/2024 | Tues | Patriot Par 3 | 7/30/2024 | Tues | Friday Night Shootout 4 |
| 4/3/2024 | Wed | Thurs Senior League | 8/6/2024 | Wed | Member/Member #2 |
| 4/15/2024 | Mon | Member Guest 1st Email | 8/7/2024 | Wed | Coach Teall Outing |
| 4/24/2024 | Tues | Mother's Day Brunch | 8/13/2024 | Tues | Couples Championship |
| 4/25/2024 | Wed | Women's 9 Hole League | 9/3/2024 | Tues | Big Hole Scramble |
| 4/30/2024 | Thur | Women's 18 Hole League | 9/24/2024 | Tues | The Gauntlet |
| 5/1/2024 | Tues | Member/Member #1 | 9/25/2024 | Fri | Fall Greens Aerification |
| | | | TBD | TBD | Member Appreciation Dinner |